



# GMT MONTHLY MEMBERSHIP PROGRESS REPORT

Results as of: 1/31/2020

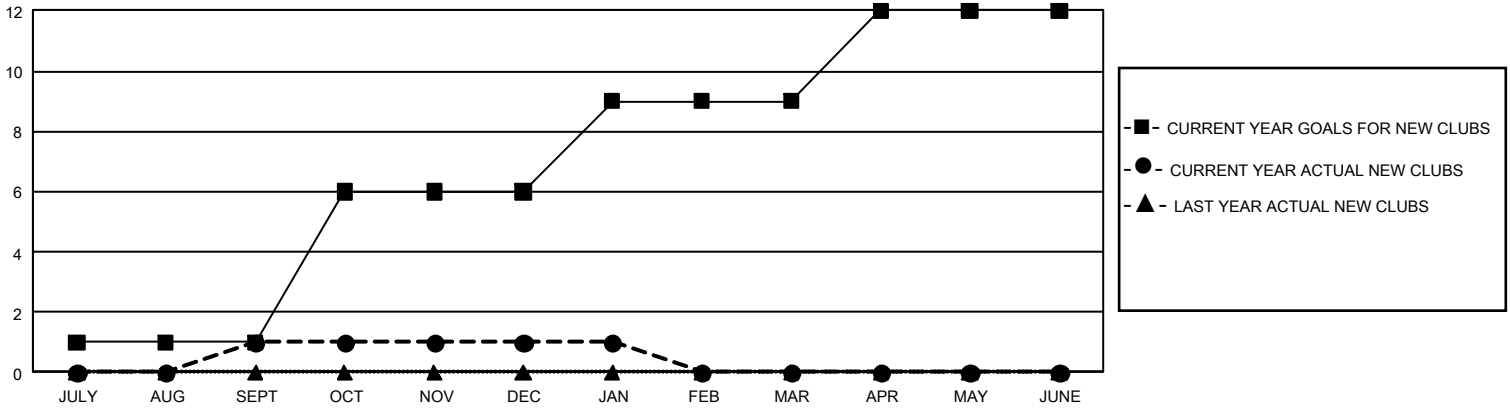
## GMT Constitutional Area 5 - J, Group I

GMT: OPEN

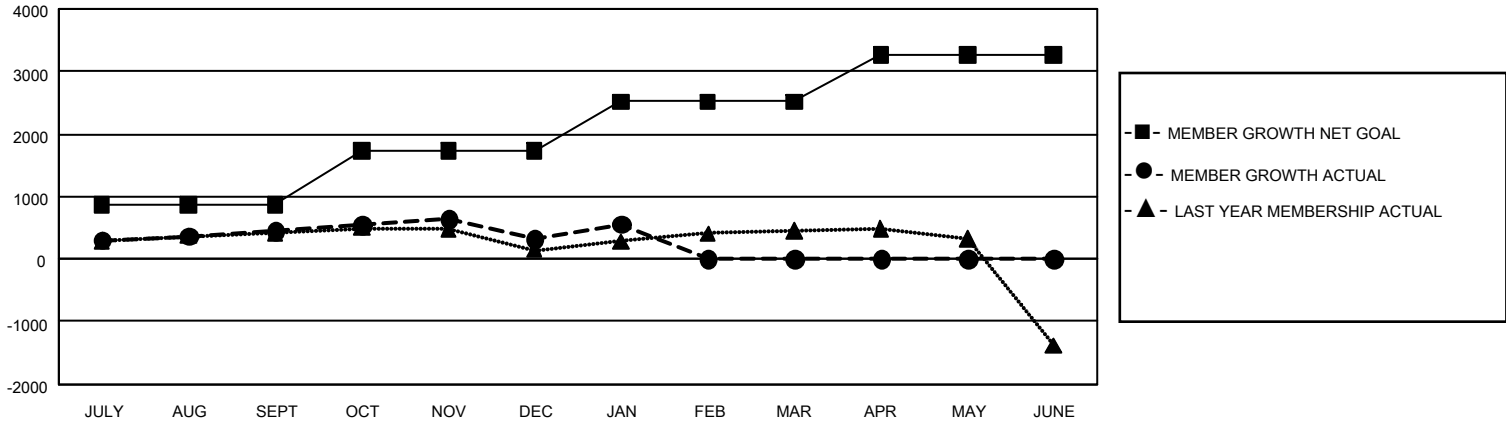
REPORT DOES NOT INCLUDE CLUBS IN UNDISTRICTED AREAS.

Clubs				Members			
RESULTS FOR 2019-2020				RESULTS FOR 2019-2020			
QUARTER	NEW CLUB GOAL	NEW CLUBS	DROPPED CLUBS	QUARTER	MEMBER GROWTH NET GOAL	MEMBER GROWTH ACTUAL	DROPPED MEMBERS ACTUAL (including transfers)
JULY/AUG/SEPT	3	1	2	JULY/AUG/SEPT	2,595	1,034	525
OCT/NOV/DEC	15	0	1	OCT/NOV/DEC	2,598	584	702
JAN/FEB/MAR	9	0	0	JAN/FEB/MAR	2,358	384	142
APR/MAY/JUNE	9	0	0	APR/MAY/JUNE	2,265	0	0

**GOALS AND ACTUAL NEW CLUBS CUMULATIVE**



**GOALS AND ACTUAL MEMBERS CUMULATIVE**



<b>DROPPED CLUBS: 3</b>	585 CLUBS OF 816 ADDED 1 OR MORE NEW MEMBERS	<b><u>GENDER DISTRIBUTION</u></b> MALE            26,406 (73.41%) FEMALE         9,567 (26.59%)
<b><u>DROPPED MEMBERS</u></b> DECEASED            175 CLUB CANCELLED      35 OTHER                 1,159 <hr/> TOTAL                 1,369	<a href="#">CLICK HERE FOR CUMULATIVE MEMBERSHIP DATA</a>	TOTAL FAMILY UNIT MEMBERS            15,773  FAMILY MEMBERS PAYING HALF DUES      8,483